

## Spool Insulator Deadend Clevis, ANSI 53-1 Insulator



### Features

- Hot dip galvanized per ASTM A153
- Clevis has 18mm dia. hole for mounting
- 9.5mm dia. clevis pin with self-locking cotter pin

### Clevis

Clevis Material  
Rod Material  
Compliance  
Dimension

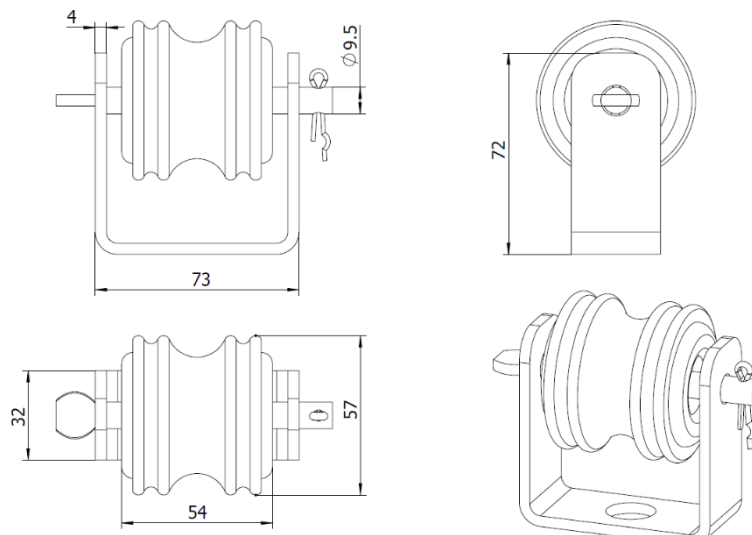
Hot-Dip Galvanized Steel  
Hot-Dip Galvanized Steel  
ASTM A153/A153M  
73\*32\*72 mm

### Insulator

Material  
Compliance  
Applicable Rated Voltage  
Height  
Outer Diameter  
Hole Diameter  
Weight

Porcelain  
ANSI C29.3, Class 53-1  
1.2 KV  
54 mm  
57 mm  
18 mm  
0.2 kg

### Dimension(mm)



Proprietary information of SIGHTES TECHNOLOGY that may not be reproduced, disclosed or used for any purpose except under the authorized written consent of SIGHTES TECHNOLOGY and may be recalled at any time. Copyright 2022 SIGHTES TECHNOLOGY. All Rights Reserved

Apr 9 2025